

Schoodic Scenic Byway Corridor Committee
Wednesday, March 12, 2014
8:30 AM – 10:30 AM
Gordon's Wharf Office

Attending: Peter Drinkwater, Thomas Sidar, Bob Deforrest, Frank Dorsey, Dick Fisher, Gary Edwards, Jim Fisher, Rod and Ruth Fanzius, Larry Johannesman

Announcements:

Gary: There is an exhibit of Hancock County historic postcards from the Penobscot Marine Museum at the Sullivan Town Office. The post cards are from Eastern Illustration Co.

Peter: Winter Harbor did this last year and asked people to add notes in a booklet beneath the postcard.

Downeast Coastal Corridor Management Plan Update

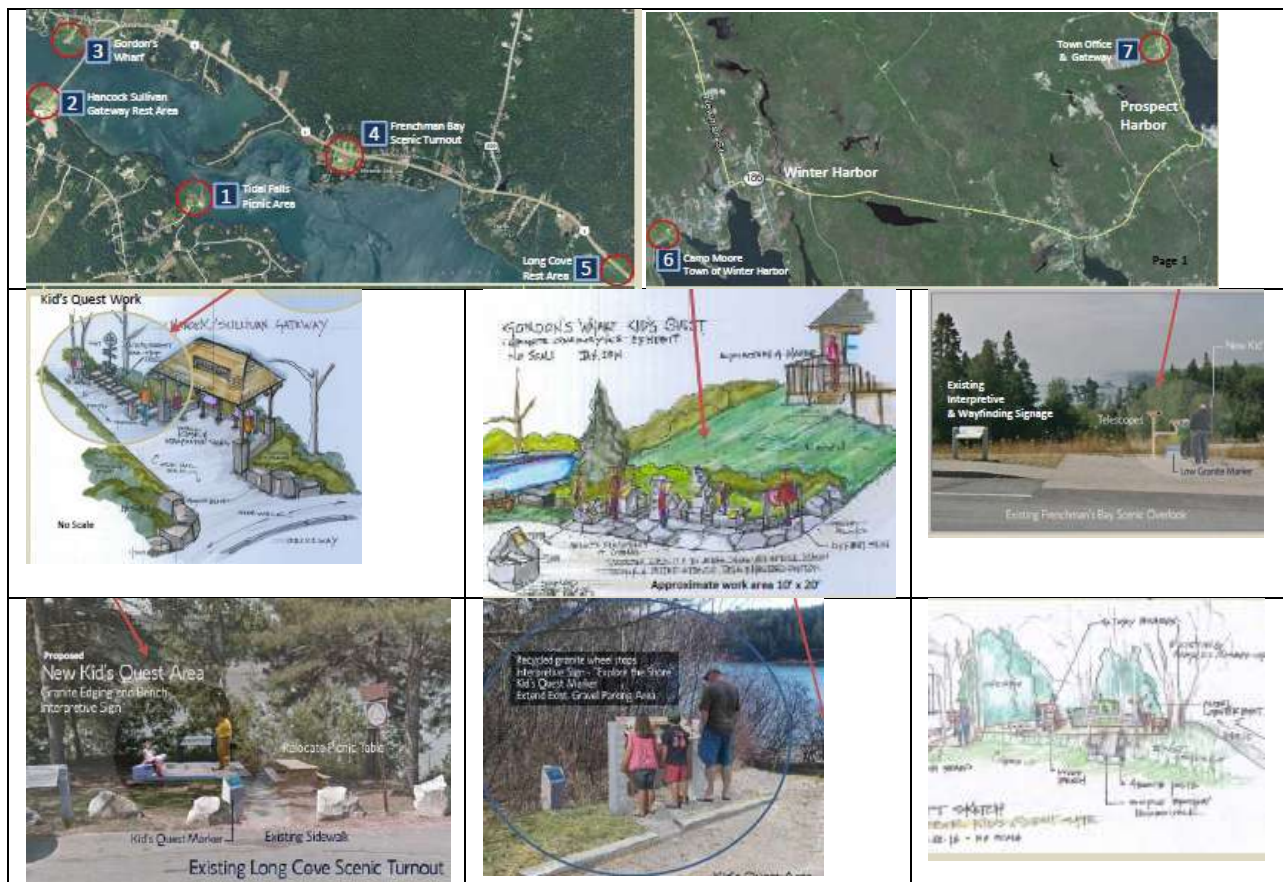
- Peter: Recommend a left turn lane in the westbound lane of Route 1 turning into East Side Road
- Recommend signage where the road crosses the Sunrise Trail
 - o Crossings
 - Route 200: Franklin
 - Route 182: Franklin
 - Route 193: Cherryfield
 - Route 1A: Whitneyville
 - Route 1: Machias
 - Route 1: East Machias
 - Route 191:
 - Route 191:
 - Route 86:Dennysville
 - o Current signs only say recreational trail – might do more to promote the trail
 - o Better signage for parking areas
- Plow turnouts during the winter
 - o Taunton Bay
 - o Frenchman Bay – Dunbar's
 - o Long Cove
 - Larry – suggest the region provide letters to the
 - Dale Doughty – MaineDOT director of operations
 - Region 2 – Steve Thebarga
- Shoulders on Route 186
 - o Bike lanes or paved shoulders east from Birch Harbor to Route 1
 - o Look into plans for width – long range would be the entire corridor
 - o Would be a very popular bicycle tour

- New Campground
- Actions:
 - Add to the updated Corridor Plan
 - Submit municipal project requests through HCPC/MaineDOT – when RFP is circulated
 - Letters to the commissioner of transportation

Schoodic to Schoodic Trail Update

- Long Cove Turnout – FBC Tucker Mountain Trail – would like a MaineDOT trail sign
- Working on a hiking trail from Tucker Mountain to the Sunrise Trail
 - Frenchman Bay Conservancy is working on additional easements

Kids Quest



Contract for the Kids Quest Logo for the entire route

Tidal Falls – Tides – Tom Sidar

- The story of tides is very complex
- Angles of Sun and Moon
- Shape of the bay floor, pinch at the falls

- Dr. Joe Kelly, UMaine Climate Change Institute
 - o Taunton Bay was a lake at one time
 - o The glacial morain that separated the lake from the sea eroded away
 - o Semi-diurnal tides – lunar calendar, 24:50 cycle
- Tides have a circular motion
- Dick Fisher
 - o Is there a way we can talk about why we care?
 - o Show people clamming,
 - o Wildlife on the flats
- Remember
 - o consult with John Cullen at DEP for signs in the shoreland zone
 - o get local CEO permits for signs

Taunton Bay Gateway

- Gary discussed the contribution of the historic bridge engine
 - o Would like to clean it up
 - o Retain the shift lever
 - o Mount the steel shafts onto a granite slab
 - Small contribution
 - Jim – Develop a contract for the base – Kevin might
 - o This contribution should be considered match
 - Need to create a document indicating that it is a contribution
 - Work is being done by Barbie Construction
 - Kevin Barbie would deliver it
 - o Create a graphic design for the plaque that goes with the motor
 - Mounted on the motor
 - o Need to be sure that kids can't get fingers caught in the lever or cut on sharp edges
- Larry is working on the contract for the kiosk
 - o Jim has renewed the permit for construction with the CEO – will pay the fee today (paid)
 - o Might want to add a small sign – continue the quest on the Old Pond Railway Trail
 - o Tracks should be narrow gauge – kids size to fit in that space
 - o We have the interpretive panels already – just need the structure to install them
 - o Jim will contact Tom Testa to see about a late spring installation of the tracks

Gordon's Wharf

- We can shift the site in the area at the base of the septic field
- Obi Buell can be contracted for assistance – Jim
 - o Different stages of granite
 - o One interpretive panel at the end about the process
- Gary – need to update this to fit with the plan for the path and

- Quarried Sullivan granite
 - o Might feature cobbles and how they were made
 - o Stone Store
 - o St Stephen's old jail
- Ruth – should we have any safety, warning, insurance disclaimers?
 - o Larry – need to design the facilities are design correctly

Frenchman Bay Turnout – Jim needs to order a telescope.

Long Cove – Native American

- Native American names for things you see
 - o Tide
 - o Clam
 - o Bay
 - o Mud
 - o Water
- Illustrations
- Pavers – bench
- Etching in granite pavers
 - o CCM Machine in Ellsworth etches granite
- Smart tag – to pronunciation of the word
- Contract with Abbe for assistance
- Continue the Quest Reference Passamoquoddy Museum in Pleasant Point

Camp Moore

- Need to get a contract for design of site
- Barbie for installation
- Need to find a designer – See if there is a graphic designer available
 - o Mary Laurie (SAFA)
- College of the Atlantic Natural History Museum might have student designers
- Involve local kids

Prospect Harbor

- Need to put in a stone dust path
 - o Contract this out
- Make a community event out of launching the ship
 - o Have volunteers push it into place
- Name for the Boat
 - o Contest at the school
- Eve would like us If we can hire Beckie Okeefe to plant cedars
 - o Jim will work with Eve to arrange this for the spring

- Need to put some flagstones where the bridge meets the ledge
 - o Fill some puts in the ledge with stone dust
 - o Marine plywood ramp to the back of the boat
 - Mert Shipman – might do this work
- Date – Late May or early June for rolling in the boat
 - o Encourage school to participate

Interpretive Signs Project

Gordon's Wharf - Three interpretive signs

- Sign 1: Scenic Geology
- Sign 2: Granite mining – connected with kids quest
- Sign 3: Ecology

Prospect Harbor - Watering Cove at Prospect Harbor

- Interpretive panel on the water side of the Dorcas Library
- Need to manage parking
- Path to the site
- Need to see that the library is onboard with this

Sullivan – Sumner Park

- Interpretive sign in the park
- Sumner Park Committee – Ray Daily
- Historical society can provide information
- Challenge with drainage – need to clean the ditches
- Create a small parking area with the signs

Wayfinding Signs

- Gordon's Wharf + Sullivan Town Park – See if MaineDOT can create a sign that directs people onto Taunton Drive
- Fraser Point – Ask Acadia National Park if they would consider posting a sign, possibly on the exterior wall of the restroom facility.

Winter Harbor – Unspent Funds

- Selectmen still supporting the sidewalk on Sargent Street
- All on the South Bound side / West Side
- Larry – need the have the two request the project from MaineDOT
- Town hopes to hot-top the road this summer
- Larry – this project may not be possible until 2015

- MainedOT needs to hire a consultant to design the sidewalk
- Funds are very limited – need to determine the feasibility of the project and whether the town would augment the funds.

Other Signage

- Gordon's Wharf
 - Safety Signage at Gordon's Wharf
 - Are you aware of the tides?
 - Are you an experienced kayaker?
 - Warning about tides
 - Could have a photograph showing the extremes
 - Group provides input on other signs
 - Parking sign – not needed
 - Gordon's Wharf Welcome sign – supported, could be hung from the Deck

- Long Cove
 - Used to be a yard arm across the road – lost during road reconstruction
 - Ice Age trail Logo? Rock or post. – Jim will check with Dr. Harold Bourn
 - Trail sign for Tucker Mountain
 - Tide Clock – project stuck with a sign shop in Portland. May move it to another shop.

- Sumner Park
 - Welcome sign – Gary maintenance has been a problem
 - Need to consult with the town
 - Simple design options
 - Needs to last a long time
 - Speak with Bruce Mattson about a Park entrance sign on Route 1 (see discussion above about wayfinding signage)

- Peter
 - Can byway funds be used for a radar sign to calm traffic?
 - Concerned about the 35 MPH zone in Winter Harbor
 - Moveable sign?
 - We did not suggest this in our grant proposals
- Moore Road signs – directing people to the site

Road signs

Byway Map Signs

- Installed at Winter Harbor
- Thom Sidar - Tidal Falls could have one also on the building

Updates on Gordon's Wharf- Gary

- Have some remaining Maine Community Foundation Funds
 - o Floats on the downstream side of the ramp
 - o May put some steps to the water on the downstream side
 - o Launching bars on the float for kayaks (\$500 – extra needed)
 - o After this is done, may try to put a finger float on next year
- ADA Access to the building – ran into a hurdle
 - o No bids were received for the ramp
 - o Road contractor gave a price for the ramp – came in \$10,000 over the engineering estimate
 - o Pine Tree acknowledged that their estimate was too low – Cost is now \$25,000
 - o Re-designed the ramp to reduce the cost
 - o Will need to go back to town for about \$6,000 at town meeting
 - o Also have a MCF grant proposal in the works
 - o The railing is an expensive component– aluminum
 - o Match for Byway projects will be matched by local funds

Next meeting - Jim will send out options for time and location